

LUCE

RELIGIOUS LEATHER GOODS



LUCE

DESIGN & BOUTIQUE, LLC

CUSTOM LEATHER CATALOG
2015



Picture from our pilgrimage to the Oratory of St. Joseph in Montreal, Quebec. St. Joseph is a patron of LUCE. We carried our customers and their intentions with us to this place of prayer. "ITE AD JOSEPH" "Go to JOSEPH"

techniques

<i>hand tooling</i>	12
<i>leather staining</i>	14
<i>hand stitching</i>	16

collections

<i>fidelity</i>	20
<i>heritage</i>	26
<i>icons & images</i>	28
<i>luce designs</i>	36
<i>symbols</i>	42
<i>seals</i>	48

customize

<i>leather</i>	52
<i>format</i>	54
<i>stain</i>	58
<i>stitch</i>	60
<i>edges</i>	62

policies

<i>practices</i>	66
<i>shipping</i>	68
<i>payment</i>	70
<i>policies</i>	70

BEAT THE ONE-YEAR

waitlist

ORDER BEFORE AUGUST
2015, TO BEAT THE
ONE-YEAR WAITLIST.

IN NOVEMBER OF 2015, ALL
CUSTOM ORDERS WILL BE ON HOLD
UNTIL JULY 2016. DURING THIS
TIME, LUCE WILL BE IN PARIS
MASTERING THE CRAFT OF LUXURY
LEATHER GOODS WITH A TOP
ATELIER THAT PARTNERS WITH
HERMES & LOUIS VUITTON.

OUR ONLINE STORE WILL REMAIN
OPEN AND WILL SHIP FROM
THE UNITED STATES. NO NEW
OR CUSTOM ORDERS WILL BE
ACCEPTED DURING THIS TIME.
ONCE WE ARE SOLD-OUT, WE
ARE SOLD-OUT. IF YOU NEED
BIRTHDAY OR CHRISTMAS GIFTS,
ORDER NOW OR BY AUGUST 2015.



ENLIGHTENING THE
WORLD THROUGH THE
BEAUTY & EXCELLENCE
OF HAND CRAFTED
LEATHER GOODS.

All of our products are hand crafted in
Ann Arbor, Michigan.

la technique

MAKES YOUR ORDER

COMPLETELY unique



TOOLING

LUCE specializes in the technique of tooling leather. Tooling is a labor intensive way of carving leather and hammering impressions into it. It is this hand tooling that adds deep character and uniqueness to each piece. Tooling gives the image dimension on the flat piece of leather. This very manual technique takes time to achieve well and time to master. Out of respect for the workers and their hands, the hours devoted to hand tooling is limited to no more than seven hours each week.



STAINING

After the leather is hand-tooled, it is stained. This process can take a half-hour to 25 hours.

Being a self-taught leather artisan, arriving at this point of leather staining and painting has taken years of experience and experimentation. Layer upon layer of stain is applied. After the leather is stained, the leather is sealed with a waterproofing finish.

This more daring experimentation with stains came thanks to my experience in the monastery. There, I became courageous enough to start tooling and staining people and intricate paintings into leather.

Though it still took another a year of experimenting with the stains, a breakthrough happened in the Spring of 2014. Now, grace a Dieu, these images are real works of art.





ABOVE Christina, LUCE's hand stitching specialist, saddle-stitches with a mahogany clamp imported from France. The needles were made in a 12 step process in Worcestershire Britain by a company founded in 1840. We search around the world for the best techniques and tools in order to best produce your leather goods.



SADDLE-STITCH

MACHINE STITCH

We offer two sewing options: machine stitched or saddle-stitch. For machine stitched items, we use an industrial nylon thread and sewing machine so that it may last for years to come. The machine stitch is your best choice if you want the lowest list price.

SADDLE-STITCH

At LUCE, we also offer the “saddle stitch,” which is the longest lasting time-tested stitch. (In France, there are still purses around from the mid1800s that are intact. They were stitched with the saddle stitch.) This equestrian stitch can only be done by hand because the threads pass consistently over each other. If the thread starts to fray from wear-and-tear, unlike machine stitch which can quickly unravel completely, the saddle-stitch's crossed stitches hold the thread, preventing it from raveling.

Though the saddle-stitch quadruples the production costs, it can be worth the extra cost. We use the same saddle stitch technique as the top high-end luxury leather designers, and we do not cut corners with the thread. We import the same high quality linen thread from France to try to give you the best result for your investment. (NOTE: Machine stitching must be used on all zippers.)

les collections

FIDELITY + ICON+ HERITAGE

FIDELITY COLLECTION

The images of this Collection come from the 12th century Ingeborg Psalter and the Benedictine Sisters at the Abbaye Notre Dame de Fidelite in Jouques, France. The Sisters are known for their beautiful artwork and cards, which is available for purchase online. www.abbayedejouques.org

In our FIDELITY Collection, we have redesigned their various images for leather. Some colors are customizable. For example, the image on the right has a golden background, while the original is a denium blue.



FIDELITY COLLECTION

CRUCIFIXION

“Standing by the foot of the Cross
were his mother...and the disciple
whom He loved.”

John 19

PENTECOST

“All these devoted themselves with
one accord to prayer, together with
some women, and Mary the mother
of Jesus, and his btohers.”

Acts 1





FULL DESIGN
Saddle Tan Stain



SIMPLE DESIGN
Dark Brown Stain

FIDELITY COLLECTION

OUR LADY OF THE ANGELS

This image comes from a postcard that I found in France and loved. Again, referencing the 12th century Ingeborg Psalter, this image of “Our Lady of the Angels” remains timeless.

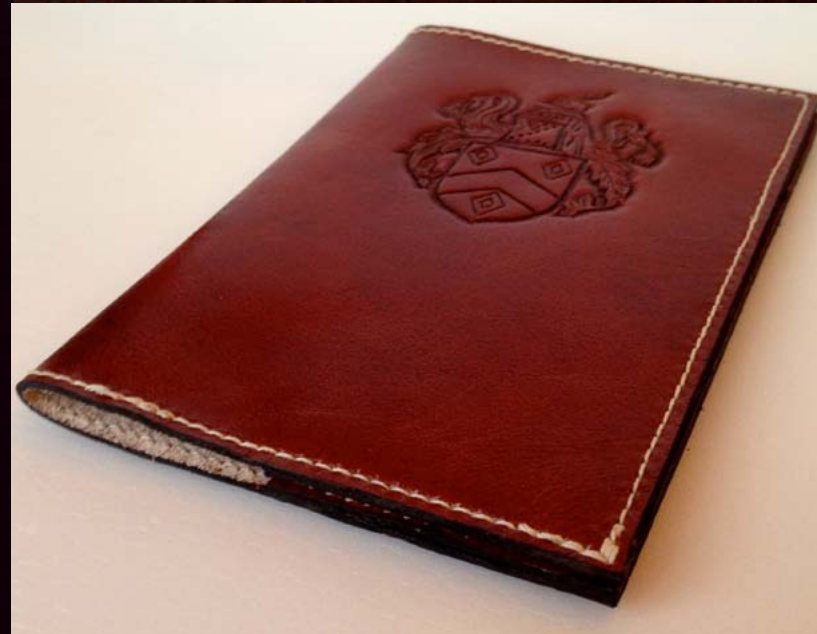
This design is available in two styles:

1. **FULL DESIGN**
2. **SIMPLE DESIGN**

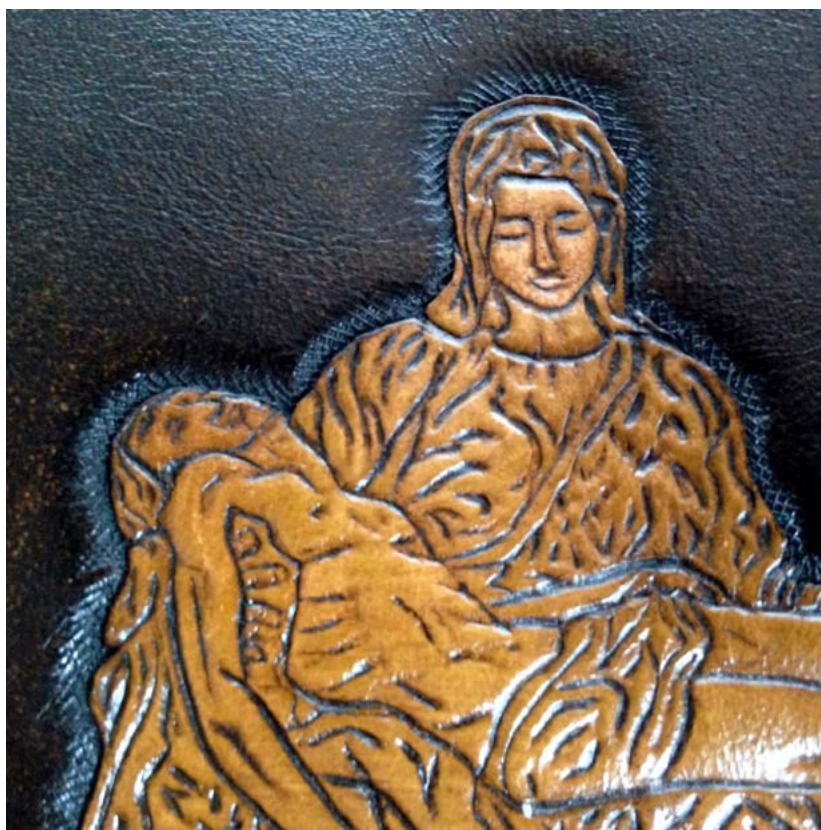


HERITAGE

COLLECTION



Our HERITAGE COLLECTION pays homage to the family because LUCE values family as much as you do. We strive to make products that last, with the hope that you can pass them down from generation to generation. LUCE invites you to buy a bag - not just for you, but one you can pass down to your granddaughter. In this collection, we hand carve & hand tool your family crest or monogram into leather. *Viva la famille!*

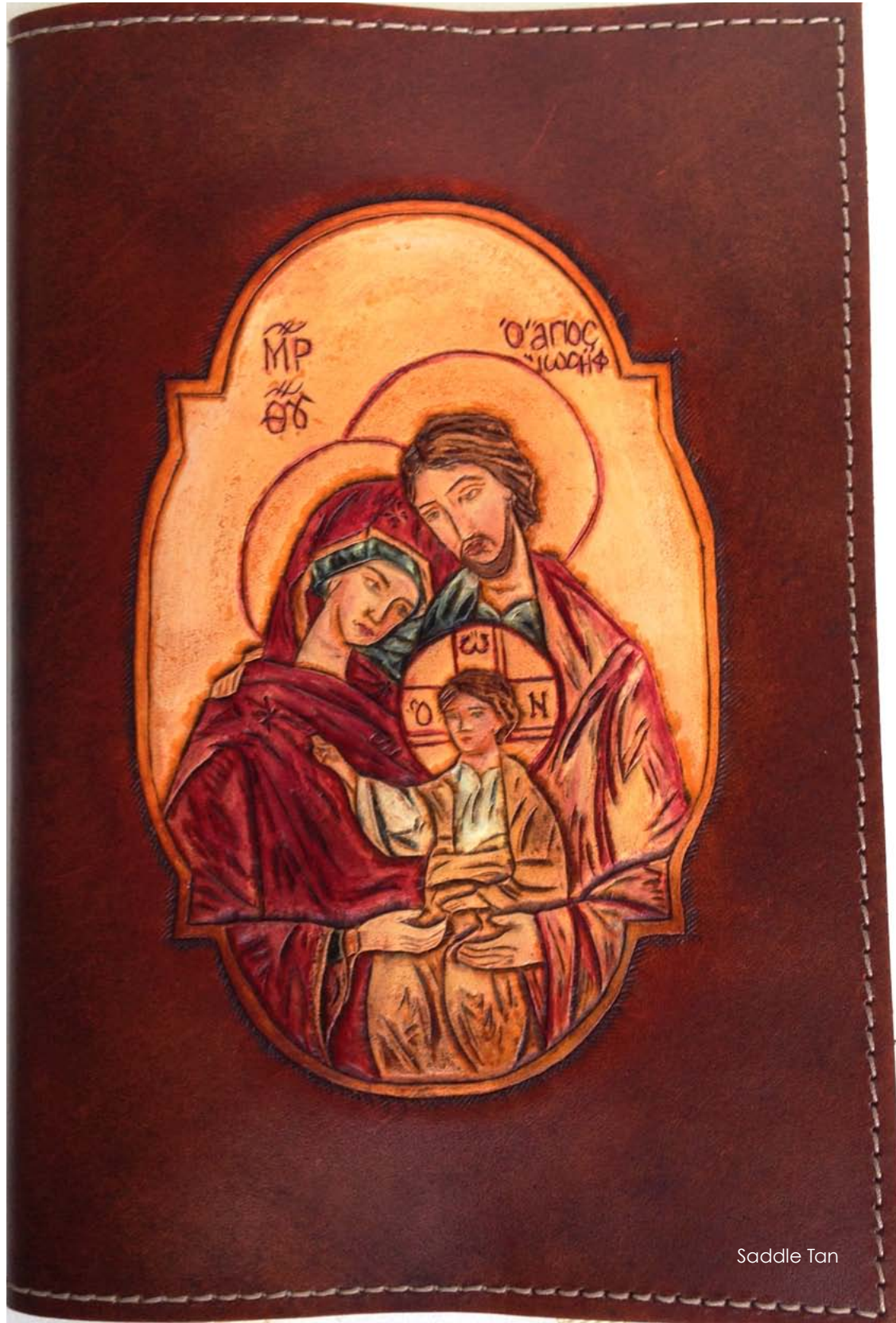


ICONS & IMAGES

ICONS & IMAGES

HOLY FAMILY ICON

This is a Romanian icon of the Holy Family: Jesus, the Virgin Mary, and St. Joseph. Icons are full of meaning. For example here, their unity is shown in the triangular formation of their hands. Joseph is dressed in blue, which symbolizes fatherhood which is received from Heaven. Need a wedding present? This makes a great heirloom family Bible cover.



HOLY FAMILY ICON

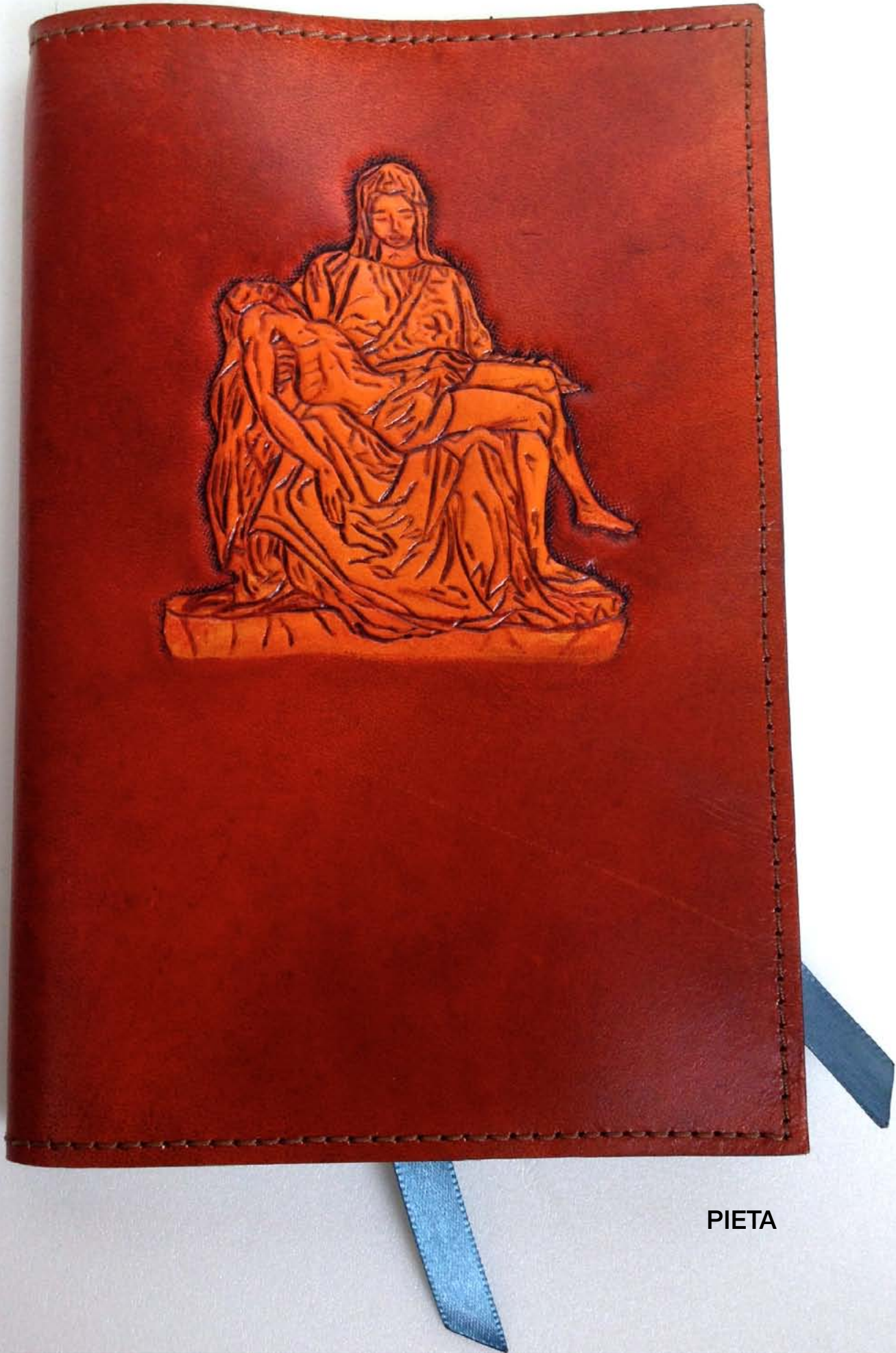
Andrei Rublev's Icon of the "Trinity" has been admired since its 15th century birth. This Russian icon is rich with symbolism as it also depicts the visit of the three angels to Abraham (Genesis 18). This icon is universally popular. Even in southern France, you are often welcomed by these prints of this icon of the Trinity in churches and homes.

On the level of design, the composition is less traditional and more contemporary. By focusing the design on a smaller part of the icon, the viewer could more deeply contemplate its rich symbolism present in that smaller view. The viewer can see more readily, for example, the fingers. Even the position of the fingers on two of the angels, are symbolic and intentional. They make the symbol for the name of "Jesus Christ" in Greek. It's an icon that is contemplative and enjoyable to study.

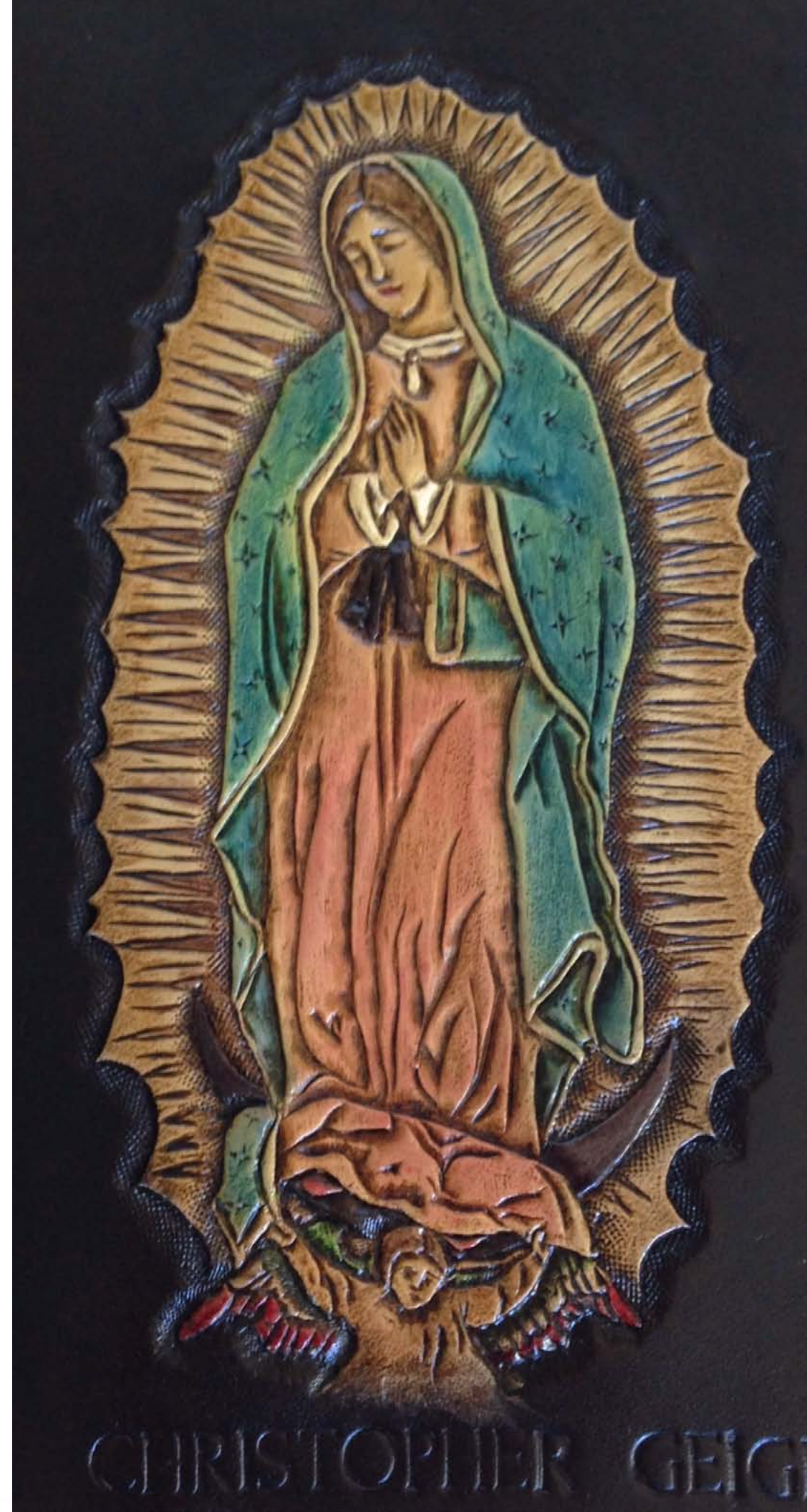
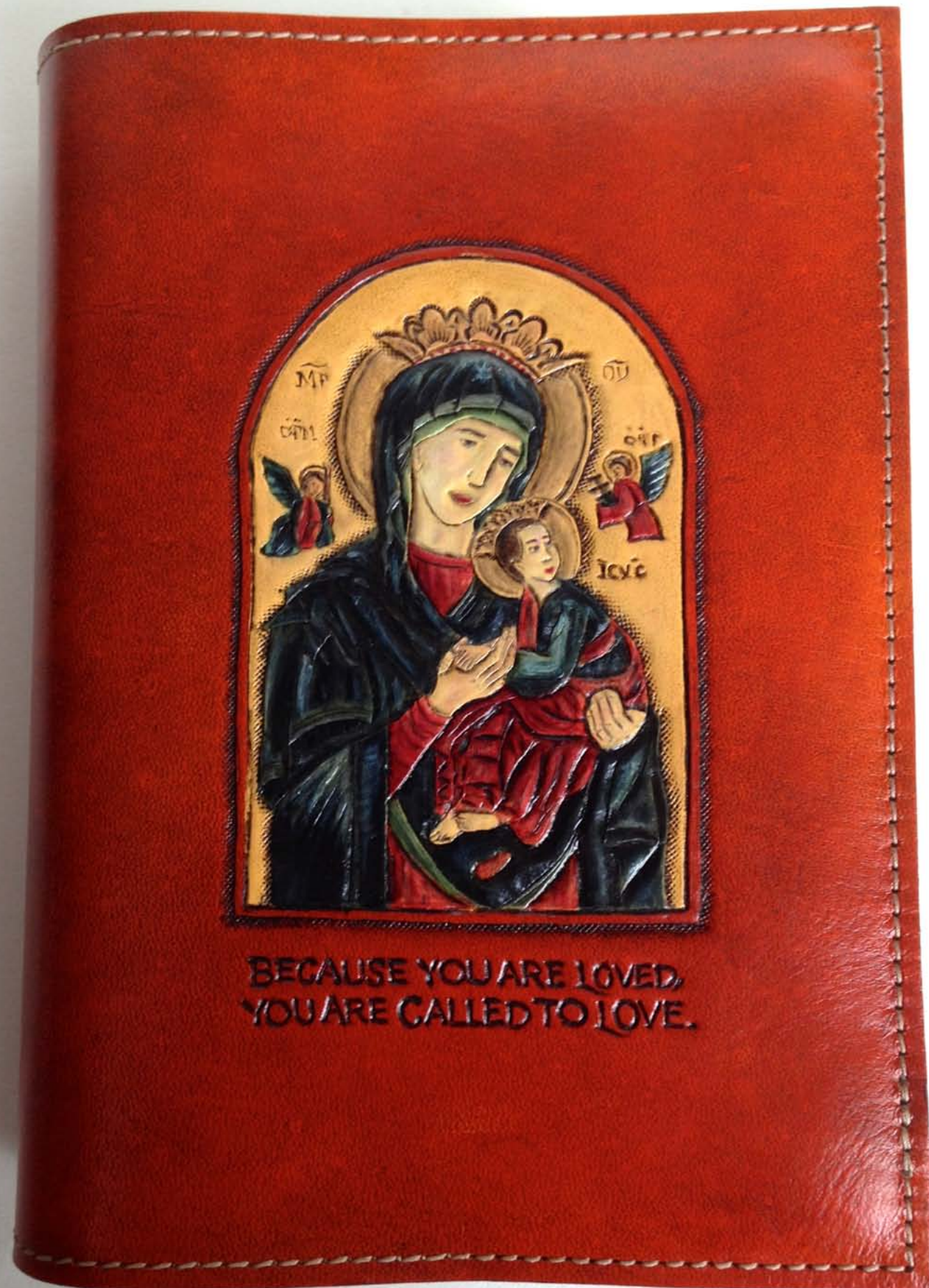


ICONS & IMAGES

DIVINE MERCY



PIETA



OUR LADY OF PERPETUAL HELP

Far Left (NOTE: script is not part of the icon, but an additional \$45)

OUR LADY OF GUATELUPE

Left (NOTE: embossed name is not part of the icon, but an additional \$20 customization fee)

LUCE DESIGNS

LUCE DESIGNS

MOTHER TERESA

This design is inspired by Blessed Teresa of Calcutta and the habit of the Missionaries of Charity. The habit of the Missionaries of Charity consist of a blue striped sari over a white habit. Blue is for the Virgin Mary.
* white-wash stain



LA FLEUR ROUGE

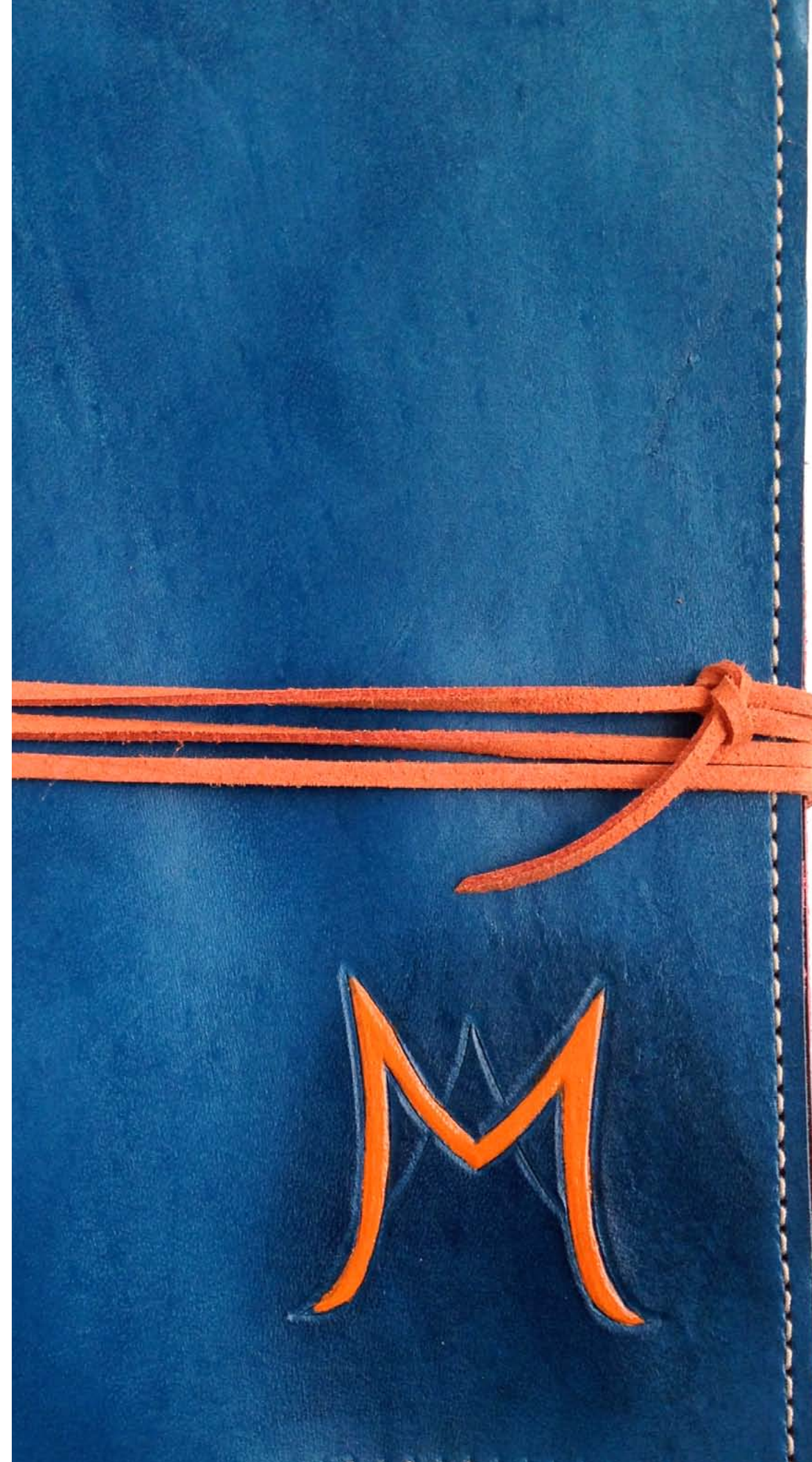
The Chinese Plum Blossom is greatly loved in China. Snow acts as its leaves. It vibrantly blooms on the coldest and darkest days in winter. This flower brings light and joy on these days.

This Chinese Plum Blossom is designed in remembrance of the Church in China and persecuted Christians.



AVE MARIA

This symbol features a hand tooled “M” for “Maria.” Discretely behind the “M” hides an “A” for “Ave.” Designed in 2013.



JPII SHIELD

We simplified the papal seal to just the shield.

TOTUS TUUS

Saint John Paul II's Coat of Arms here is simplified to highlight the Cross & Mary's presence. "Totus Tuus" comes from John Paul II's often repeated Latin prayer, "Totus Tuus, Maria., or" "Totally Yours, Mary."

JPII SEAL

Saint John Paul II's papal seal
Saint John Paul II's Coat of Arms highlights the Cross central mystery of Christianity: the Redemption. Here, the focus is on the Cross & Mary's presence at the cross and her participation in the Redemption.



TOTUS TUUS



JPII SHIELD



JPII SEAL



2-3 oz Tooling Leather
Multi-Color in Claude Stain III

LUCE DESIGNS

FIAT LUX

"Let there be light," or "Fiat Lux," as Genesis 1:3 asserts in Latin. This original design is inspired by the light of Christ.

St John tell us, "...the light shines in the darkness; and the darkness grasped it not," John 1:5. Since Christ is the light, we, His disciples, are called to talk in His light and radiate His light in the darkness of the world. The way in which we give His light to the world is through the truth and love.

Its form is an abstraction of a flame. This flame, which gives light, is the burning flame of love. The intential contrast in color between the flame and the rest of the body enhances this point of light overcoming darkness.

SYMBOLS

JERUSALEM
CROSS



AMDG



Verso L'Alto

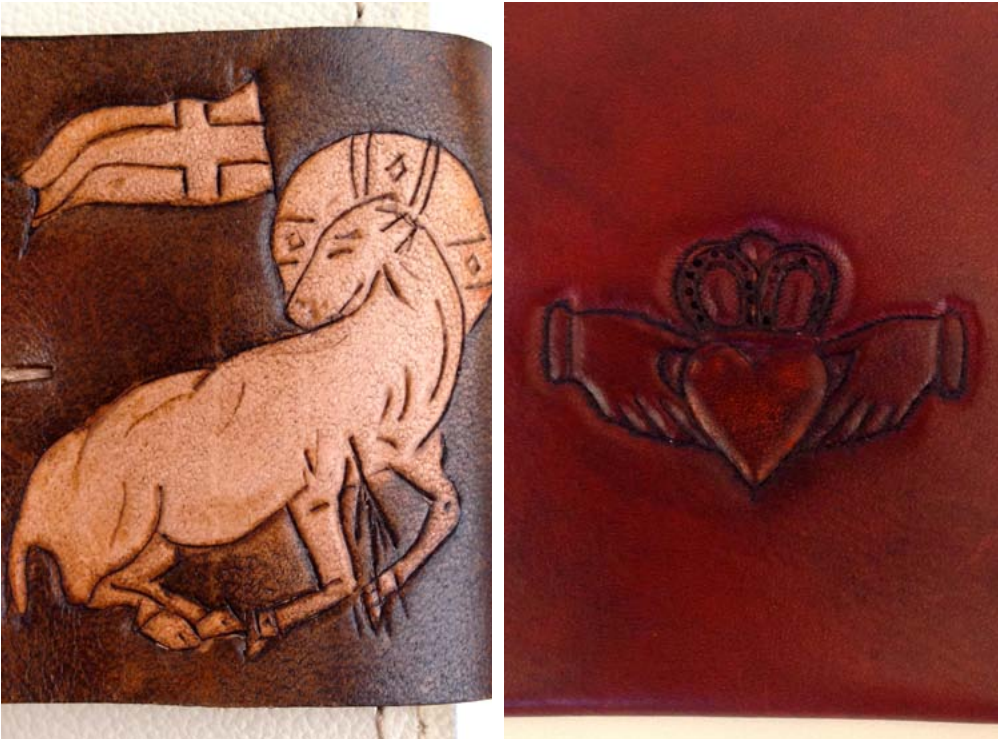


SACRED HEART



IHS

LAMB



CLADDAGH

SYMBOLS

SEALS



SEALS

Custom design a leather cover with the crest of your diocese, religious order, or even your family crest.

Any copywrited logo or seal will not be used without proper permissions needed.

This makes a great gift for a seminarian, priest, or bishop.



(ABOVE) Seal of the Archdiocese of Galveston-Houston
4 oz. Euro Bend Tooling
Leather in Dark Brown

customize

make it your very own

LEATHER

LUCE's custom covers are made of vegetable tanned tooling leather. Tanning is the chemical process in which the tannin is added to the hide fiber. This process permits leather to dry & remain flexible.

Vegetables tanning is the "old-fashion" tanning method, but is considered now to be "speciality tanning." A 100 years ago, this process required a year for each hide. Now, the process takes 1-3 months. Vegetable tannin uses nuts, tree bark, leaves, and other organic materials. The result is a leather which can be molded and carved while maintaining a firmness.

4 oz. Euro Bend



Specify which veg tan tooling leather option you would like:

+ 2-3 oz. LEATHER \$


This leather generally comes from South America. Its thinness makes it ideal for Magnifcat covers and other smaller leather products.

+ 4 oz. EURO BEND \$\$\$

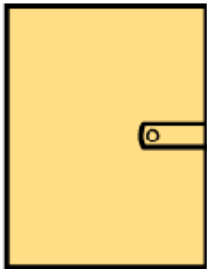
This Premium Grade European Single Bend Tooling leather is a Scandinavian cowhide. Being tanned by one of the oldest continuously operating tanneries in Europe, this leather is expensive. Its thickness leaves much deeper impressions. It is ideal for Breviary covers with zippers or large Bibles.



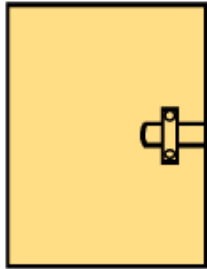
FORMATS



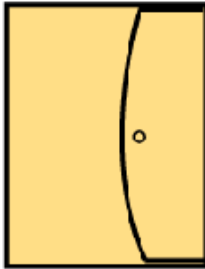
SIMPLE /
or
ZIPPER



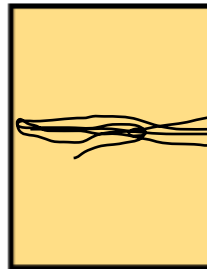
DOMINIC
BELT*



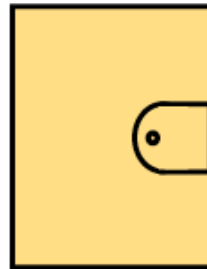
CLAIRE
BELT



THERESE
CLOSURE*



WRAP



JORDAN BELT*
(snap or stud)



CLOSURE COSTS

Includes timely labor cost & hardware

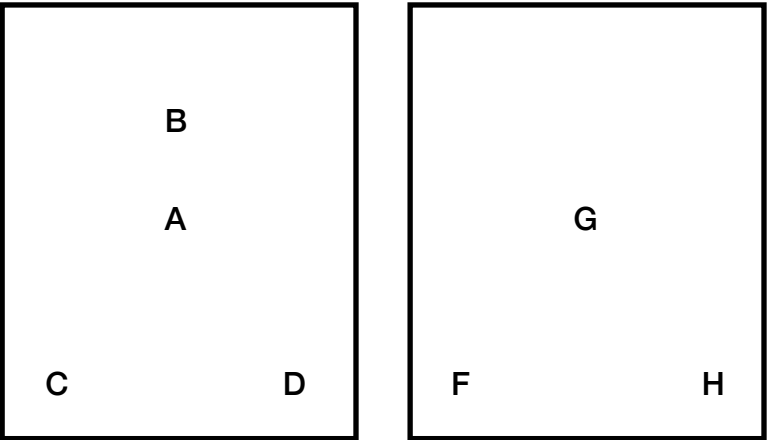
ZIPPER	+ \$110
DOMINIC BELT solid brass snap	+ \$15
CLAIRE BELT	+ \$20
THERESE CLOSURE solid brass snap or solid brass stud	+ \$20
WRAP	+ \$7
JORDAN BELT solid brass snap or solid brass stud	+ \$30

** For the DOMINIC BELT,
THERESE CLOSURE, JORDAN
BELT: If we do not have your book,
you may need to send it to the
studio for the belt fitting.*

IMAGE PLACEMENT

Below are the various places we can place your image. Tell us where you would like your image by referencing the letter.

For the JORDAN BELT: images may be placed on the belt, as pictured above.



FRONT

BACK



ZIPPERS

Our imported brass RiRi zippers are designed in Switzerland and handmade in a small town in Italy. RiRi zippers are world-renown for high-quality and used by luxury handbag designers.

Covers with zippers are only made for the standard size 4-Volume Liturgy of the Hours set.

BLACK (Above)

Tape: black
Teeth: polished brass finish

DARK BROWN

Tape: brown
Teeth: antique brass finish

TAN

Tape: tan
Teeth: silver finish



SNAP

Our snaps are made of solid brass in Northeast America. Please select one of the finishes.



**ANTIQUE
BRASS**

BRASS

NICKEL

WRAP

Our cord is made of genuine suede. For the wrap closure, please select a color.



RED

PINK

ORANGE

CREAM

BROWN

**LIGHT
TURQUOISE**

BLUE



STAIN

Select from the variety of stains offered. You may specify the body color. If you would like accent colors or other specific details, please specify them when you place your order.



BLACK



**DARK
BROWN**



**MED
BROWN**



TAN



BLUE



**CLAUDE
BROWN 1**



**CLAUDE
BROWN 2**



**CLAUDE
BROWN 3**



SOLID STAIN \$
One stain color.



TWO-TONE \$\$-\$\$\$
Two colors.
The price is relative to the difficulty and time required. Some two-tone staining can take 30 minutes, others can take two hours.



MULTI-COLOR STAIN \$\$\$
Full coloring.

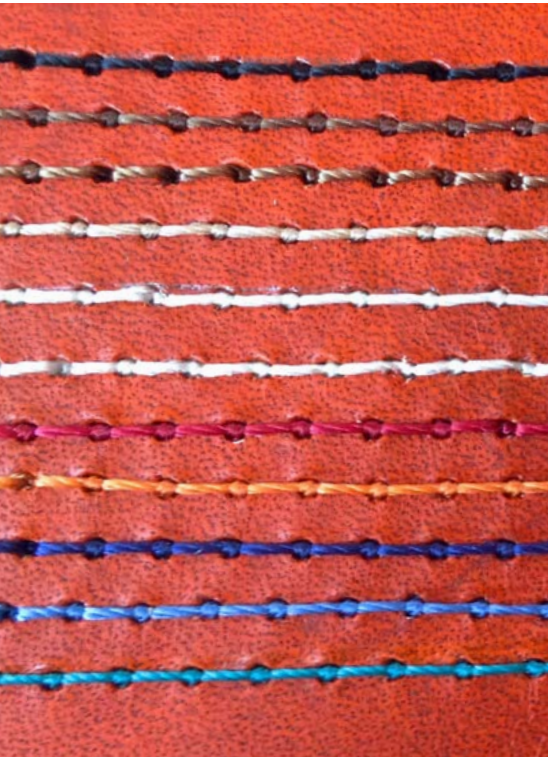


THREAD

MACHINE STITCHED \$

Industrial nylon thread, sewn on an industrial sewing machine

- BLACK
- DARK BROWN
- MED BROWN
- KHAKI (DEFAULT)
- OFF-WHITE
- WHITE
- RED
- ORANGE
- NAVY BLUE
- BLUE
- TURQUOISE



HAND STITCHED \$\$\$

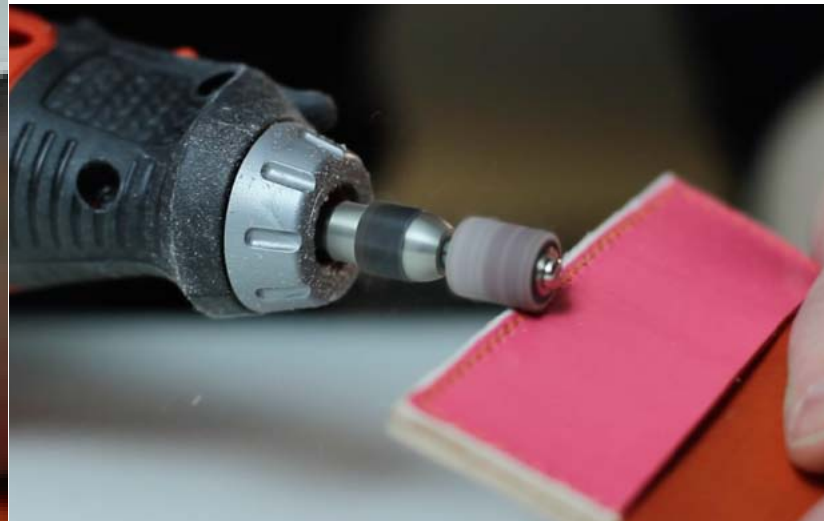
We import the same durable French Lin-en Thread used by luxury handbag makers. Our selected thread company has skillfully mastered the French “Savoir-Faire” since 1847. The strands are double twisted. Then, it is moistened and retwisted. Moistening the linen fibers keep it from distorting while giving it a greater strength. This thread is about 10x more expensive than standard linen thread.

- BLACK
- WHITE
- NATURAL
- ORANGE
- TEAL
- BLUE





ABOVE We practice the traditional time-tested method of finishing our edges by melting down the fibers with wax.



FINISHED EDGES

Finished edges make all the difference. It is this last detail that is rather arduous and timely. The images to the left only show some on the steps of the process. Then, these steps have to be repeated five times to ten times over to achieve the proper finished edge.

Please choose from our selection which color you would like for your passport holder.



DARK BROWN

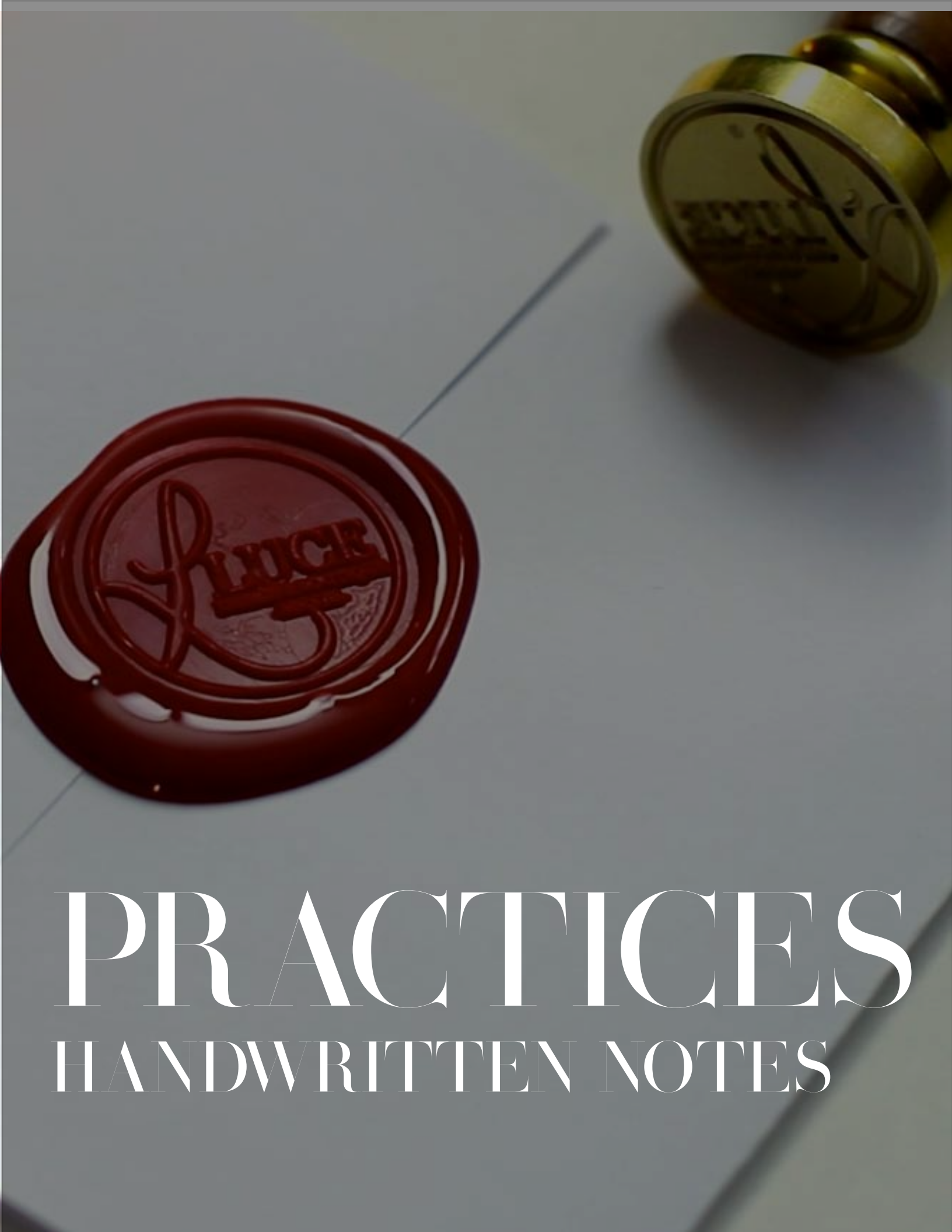


BLACK



ORANGE

policies



PRACTICES

HANDWRITTEN NOTES



Wax seal? Personal handwritten note? We love them too! No matter the price point, LUCE wants to thank you with a little note. For custom orders, we even finish them with a wax seal. At LUCE, we strive to treat our customers and our artisans with dignity and respect. Our buyers are people; our artisans are people. We do not treat either as a number, but as a person.

For our customers, we believe this little act lets you know how much we thought of you as we made your very own LUCE original. Also with a note from the artisan, you know the source of this unique hand crafted piece of art: a human person, not a machine.

For our artisans, not only does a note give closure to a work they put their heart into; but also, it helps us remember the finality of our work: you! You're not a number to us. You're a person - a person who holds an intention behind your order with us.

PACKAGING

Given the natural leather we use, LUCE labels packages with cotton canvas stickers. We enclose each leather item in a cellophane bag to best safe-guard the item in shipping.

UNITED STATES

LUCE generally uses USPS shipping. Shipping prices vary on the size of the goods and insurance costs.

USPS PRIORITY SHIPPING

includes tracking & \$50 insurance

Small Box	\$6.50
Envelopes	\$6.50
Medium Box	\$9.00

Additional insurance available
add \$1 for every \$100 value

USPS EXPRESS SHIPPING

We can send a package via Express mail, for the current Express shipping rate.

INTERNATIONAL

LUCE sells and ships merchandise via United States Postal Service (USPS) to:

- AUSTRALIA
- CANADA
- FRANCE
- GERMANY
- IRELAND
- NEW ZEALAND
- NETHERLANDS
- UNITED KINGDOM

INTERNATIONAL

PRIORITY SHIPPING

5-10 days, unless held in customs
NO TRACKING. \$50 insurance, more insurance available for increased cost

Small Box	\$18.00
Envelop	\$18.00

Includes tracking + \$50 insurance
Medium Box

FLAT RATE PRIORITY SHIPPING

5-10 days, unless held in customs
NO TRACKING. \$50 insurance, more insurance available for increased cost

Small Box	\$26.00
Envelop	\$26.00

Includes tracking + \$50 insurance
Medium Box \$48.00

REGISTERED MAIL

2-3 weeks, unless held in customs
TRACKING. \$50 insurance, more insurance available for increased cost

Small Box	\$18.00
-----------	---------

EXPRESS SHIPPING

2-3 days, unless held in customs
TRACKING. \$50 insurance, more insurance available for slightly increased cost

Envelop	\$46.00
---------	---------



SHIPPING



POLICIES

CUSTOM ORDER FEE

All custom orders start with an initial *custom order fee* of \$50.

DISCLAIMER

LUCE does the best to color match on the computer every item to the actual leather item. Sometimes the color of the leather and tooled images appear differently on various computer screens.

PAYMENT

Invoices may be paid via:

- Check
- PayPal*
- Square-Up* (Mastercard, Visa, etc.)

* Additional service fees are added to the customer's invoice.

READY-MADE PRODUCTS

Payment is taken at the moment of purchase. No items will be sent without a payment for the item, tax, and the shipping.

CUSTOM ORDERS

LUCE will not start work on the custom order until the payment is received in full. No items will be sent without a payment for the item, tax, and the shipping.

REFUNDS & EXCHANGES

READY-MADE PRODUCTS

Orders cannot be cancelled after the item is shipped. A refund or exchange is then available with the first 30 days after purchase. No returns or exchanges on used items.

CUSTOM ORDERS

All sales are final.

No refunds on custom orders.

LIMITED WARRANTY

We strive to make items of quality that will last. We are attentive to detail and do our best to produce and inspect our products before selling them.

For an item over \$300: if a manufacturing defect arises within the first year of the purchase, LUCE will repair the defect.

LANGUAGES

LUCE can do business in English and French.